

兔抗 WIF1 多克隆抗体

中文名称: 兔抗 WIF1 多克隆抗体

英文名称: Anti-WIF1 rabbit polyclonal antibody

别名: WIF-1

抗原: WIF1

储存: 冷冻 (-20℃)

宿主: Rabbit

反应种属: Human, Mouse, Rat

相关类别: 一抗

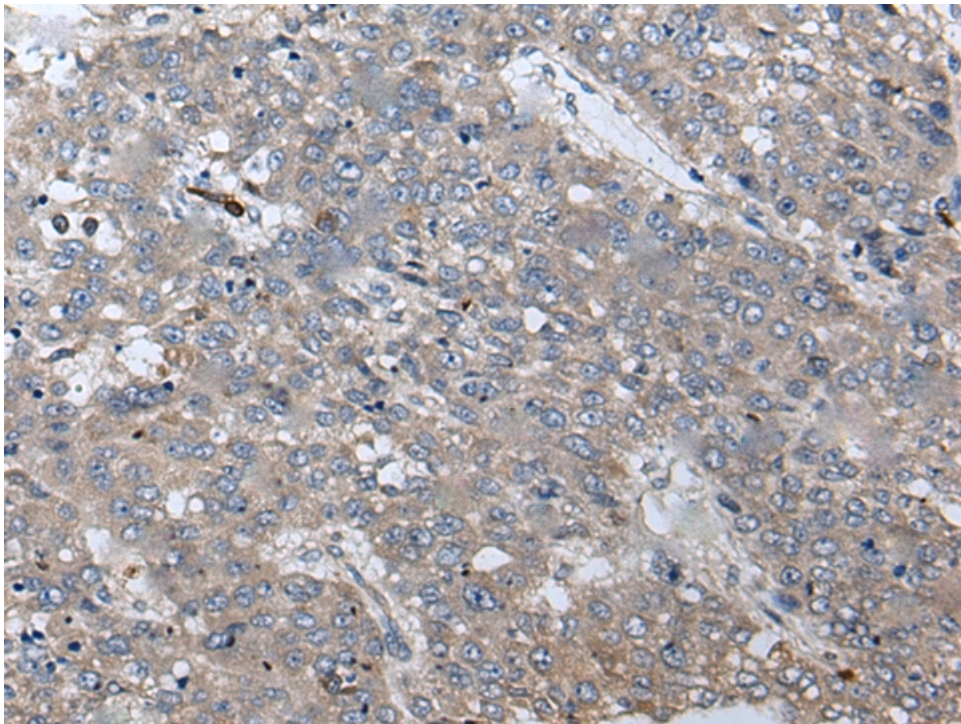
标记物: Unconjugate

克隆类型: rabbit polyclonal

技术规格

Background:	The protein encoded by this gene functions to inhibit WNT proteins, which are extracellular signaling molecules that play a role in embryonic development. This protein contains a WNT inhibitory factor (WIF) domain and five epidermal growth factor (EGF)-like domains, and is thought to be involved in mesoderm segmentation. This gene functions as a tumor suppressor gene, and has been found to be epigenetically silenced in various cancers.
Applications:	ELISA, WB, IHC
Name of antibody:	WIF1
Immunogen:	Fusion protein of human WIF1
Full name:	WNT inhibitory factor 1
Synonyms :	WIF-1
SwissProt:	Q9Y5W5

ELISA Recommended dilution:	1000-2000
IHC positive control:	Human liver cancer and Human esophagus cancer
IHC Recommend dilution:	25-100
WB Predicted band size:	42 kDa
WB Positive control:	Hela cell
WB Recommended dilution:	200-1000



\