

## 兔抗 TXLNA 多克隆抗体

中文名称：兔抗 TXLNA 多克隆抗体

英文名称： Anti-TXLNA rabbit polyclonal antibody

别名： IL14; TXLN

相关类别： 一抗

抗原： TXLNA

储存： 冷冻（-20℃）

宿主： Rabbit

反应种属： Human, Mouse

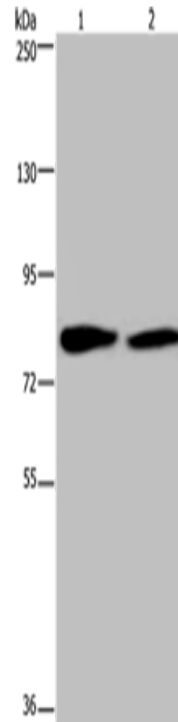
标记物： Unconjugate

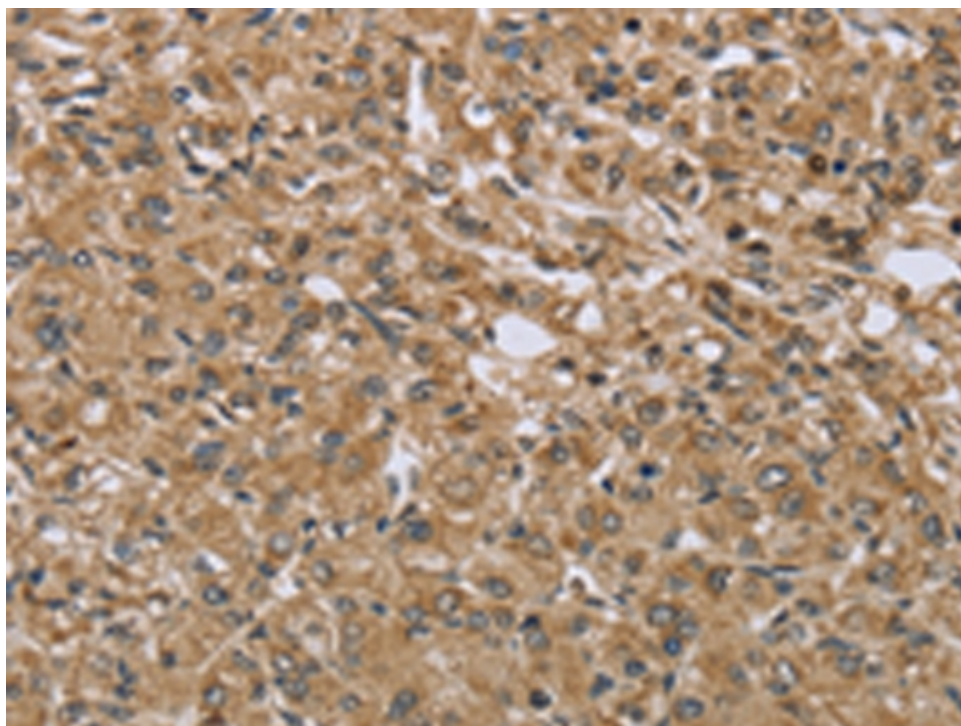
克隆类型： rabbit polyclonal

### 技术规格

<b>Background:</b>	$\alpha$ -taxilin is a novel binding partner of the syntaxin family which is implicated in intracellular vesicle trafficking. Through its C-terminal coiled-coil region, $\alpha$ -taxilin interacts with the nascent polypeptide-associated complex (NAC), which acts as a transcriptional coactivator.
<b>Applications:</b>	ELISA, WB, IHC
<b>Name of antibody:</b>	TXLNA
<b>Immunogen:</b>	Fusion protein of human TXLNA
<b>Full name:</b>	taxilin alpha
<b>Synonyms :</b>	IL14; TXLN
<b>SwissProt:</b>	P40222
<b>ELISA Recommended dilution:</b>	2000-5000
<b>IHC positive control:</b>	Human prostate cancer
<b>IHC Recommend dilution:</b>	25-100

<b>WB Predicted band size:</b>	62 kDa
<b>WB Positive control:</b>	K562 and 293T cells
<b>WB Recommended dilution:</b>	500-2000





说